



ABOUT US

Our property management team has been managing properties for over a century.

- In the late 1800s our affiliates began hospitality management in Europe
- In the 1920s residential management commenced in Brooklyn, New York City and in Bayshore, Long Island
- In the 1950s, residential , hospitality and commercial management began in the greater Tampa Bay area in Florida.
- In the 1990s, vacation property rentals were added to the portfolio in the Orlando/Disney World area
- In the 2000s, commercial, institutional, and golf course management commenced in California, Illinois, Texas, New York City, and Washington DC metro area.

Today, our vacation ownership and rental properties are coast to coast from Florida to California, Utah to the Carolinas, and we are adding locations each year.

CONTACT



7868723403



valentina@eastwestus.co



<https://www.eastwestgetaway.com>



THE MARK MIAMI, FLORIDA



ACCOMMODATIONS

THE MARK ON BRICKELL IS A 36-STORY CONDOMINIUM BUILDING LOCATED IN BRICKELL. THIS IS SOPHISTICATED CITY LIVING AT ITS BEST. COMPLETED IN 2001, THE MARK ON BRICKELL WAS DEVELOPED BY THE RELATED GROUP AND DESIGNED BY SIEGER SUAREZ ARCHITECTS. THE MARK ON BRICKELL HAS 370 CONDO RESIDENCES COMPRISED OF ONE-, TWO-, AND THREE-BEDROOM FLOOR PLANS PLUS LUXURY PENTHOUSES.



LOCATION

THE BUILDING IS DIRECTLY ON THE BISCAYNE BAY WATERFRONT AND ITS ADDRESS IS 1155 BRICKELL BAY DRIVE. ITS LOCATION PLACES RESIDENTS OF THE BUILDING WITHIN WALKING DISTANCE OF THE SHOPS AND RESTAURANTS AT BRICKELL CITY CENTRE AND MARY BRICKELL VILLAGE. BY CAR, THE MARK ON BRICKELL IS 12 MINUTES FROM COCONUT GROVE, 18 MINUTES FROM SOUTH BEACH, AND 20 MINUTES FROM MIAMI INTERNATIONAL AIRPORT.



AMENITIES

AT THE MARK, YOU'LL ENJOY SUCH RESORT AMENITIES AS

- 24-HOUR SECURITY
- A LIGHTED TENNIS COURT
- A RACQUETBALL COURT
- A SUNDECK WITH A POOL AND JACUZZI HOT TUB
- A FITNESS CENTER WITH WATER VIEWS
- ON-SITE CONVENIENCE STORE
- CONCIERGE AND SECURITY SERVICES
- A CLUBHOUSE WITH LOUNGE
- A PREMIERE WATERFRONT RESTAURANT

ADDITIONALLY, THE MARK ON BRICKELL OFFERS VALET PARKING AND CONCIERGE SERVICES. IN RECENT YEARS, THE MARK ON BRICKELL SAW A NUMBER OF BUILDING IMPROVEMENTS, INCLUDING UPDATING THE HALLWAYS, REMODELING THE LOBBY, AND ADDING GLASS RAILINGS TO THE BALCONIES.







East West
getaway

LAKETOWN WHARF PANAMA CITY BEACH, FLORIDA

ACCOMMODATIONS

THIS LUXURIOUS OCEANFRONT UNIT OFFERS A SPACIOUS LIVING SPACE AND LARGE FULLY EQUIPPED KITCHEN AND CAN ACCOMMODATE UP TO 8 GUESTS. ENJOY BREATHTAKING VIEWS FROM THE BALCONY ON THE 16TH FLOOR.



LOCATION

LAKETOWN WHARF RESIDES BETWEEN AN EXPANSIVE PRIVATE LAKE AND THE GULF OF MEXICO RIGHT IN THE HEART OF PANAMA CITY BEACH, FLORIDA. THE PROPERTY IS CONVENIENTLY LOCATED, JUST A 30-MILE DRIVE TO THE NORTHWEST FLORIDA BEACHES INTERNATIONAL AIRPORT.



AMENITIES

FIVE RESORT-STYLE POOLS
LAKE AND PRIVATE
BOARDWALK
PUTTING GREEN
RESTAURANT
FITNESS CENTER WITH SPA
TUB
PLAYGROUND





East West
getaway

VILLA CAPRIANI NORTH TOPSAIL BEACH, NORTH CAROLINA

ACCOMMODATIONS

2 BEDROOM/2 BATHROOM
(SLEEPS 6)

NEWLY RENOVATED OCEAN
VIEW CONDO WITH
SEPARATE LIVING SPACE,
FULLY EQUIPPED KITCHEN
AND WASHER/DRYER.

LOCATION

THE CONDOMINIUM IS SITUATED IN
BEAUTIFUL NORTH TOPSAIL BEACH IN NORTH
CAROLINA WHERE THE WATER
TEMPERATURES ARE WARM ENOUGH TO
SWIM AND PLAY MAY THROUGH OCTOBER.
THE VILLA IS CLOSE TO SEVERAL LOCAL
SHOPS AND RESTAURANTS SO YOU CAN
HAVE YOUR PICK OF DISTINCTIVE ISLAND
TREASURES AS WELL AS SOME OF THE BEST
SURF AND TURF AROUND.



AMENITIES

FOUR OCEANFRONT POOLS

HOT TUBS

POOLSIDE CABANA BAR

ON-SITE RESTAURANT

TENNIS COURTS



SUGAR MOUNTAIN, NORTH CAROLINA



ABOUT

SUGAR TOP RESORT IS A UNIQUE CONDOMINIUM COMMUNITY LOCATED ATOP LITTLE SUGAR MOUNTAIN NEAR BANNER ELK, NORTH CAROLINA. PERCHED AT AN ELEVATION OF 5,000 FEET, THIS FULLY-FURNISHED TWO-BEDROOM CONDO OFFERS MAJESTIC VIEWS OF SUGAR MOUNTAIN SKI SLOPES

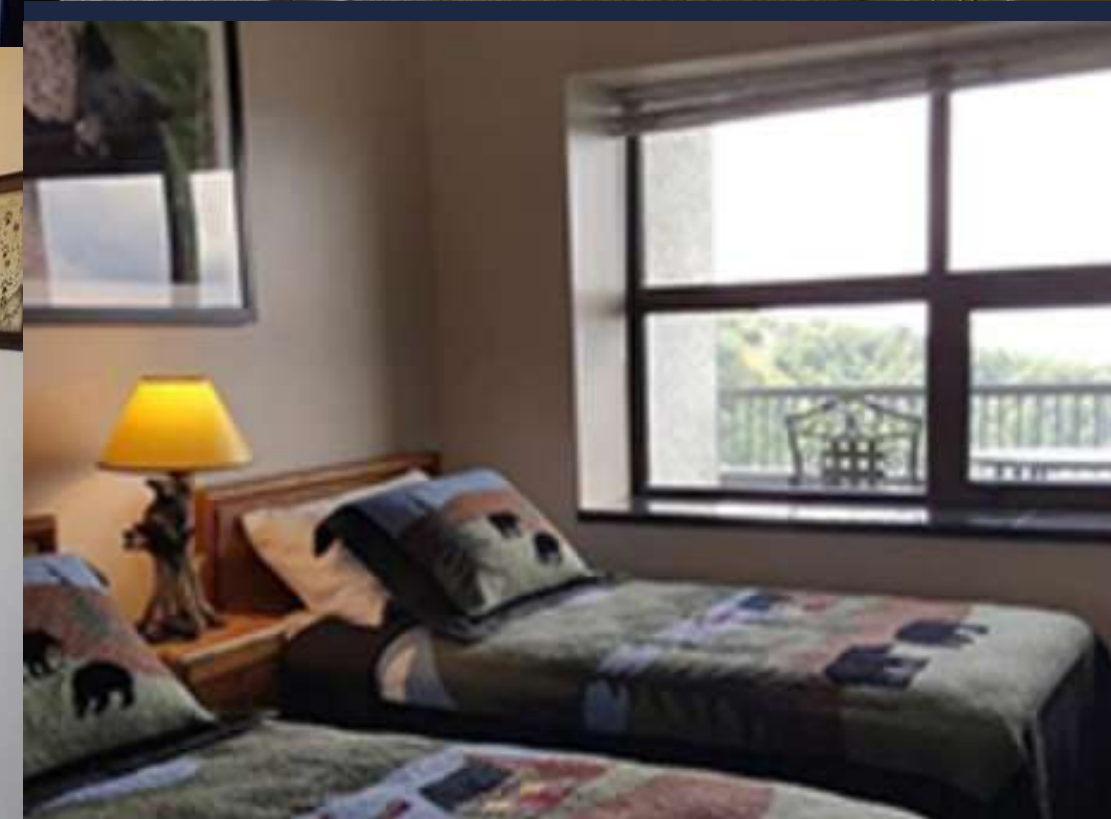
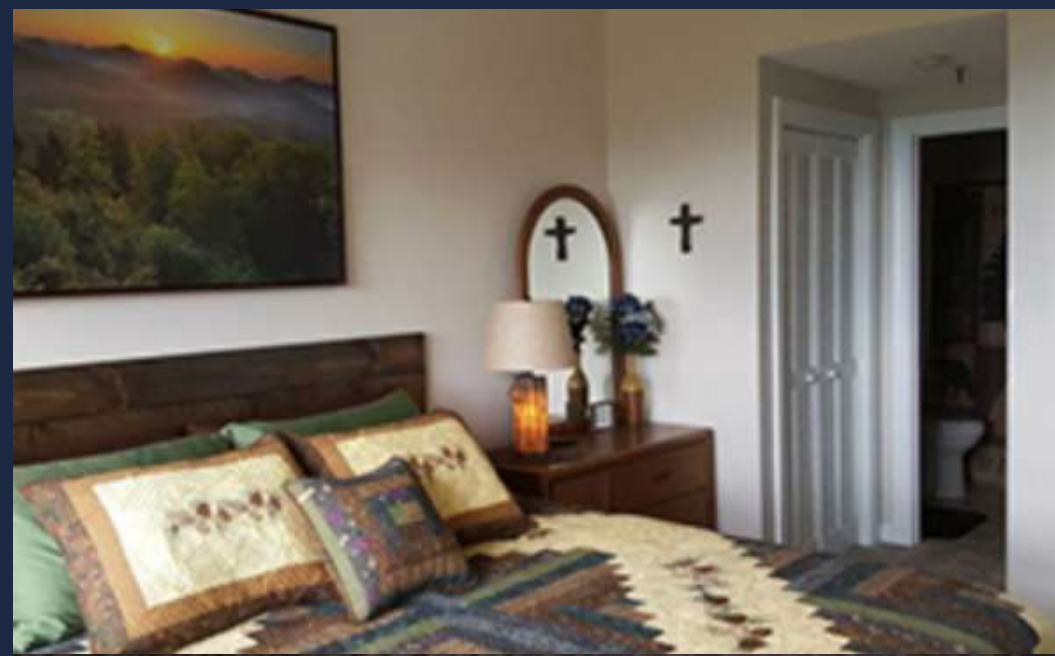


LOCATION

ESCAPE TO THE WESTERN NORTH CAROLINA HIGH COUNTRY AND YOU WILL FIND A WIDE VARIETY OF ACTIVITIES AND ATTRACTIONS TO ENJOY, ALL SURROUNDED BY THE BEAUTY OF THE BLUE RIDGE MOUNTAINS. AT THE BASE OF SUGAR MOUNTAIN LIES THE TOWN OF BANNER ELK, KNOWN FOR ITS FRIENDLY COMMUNITY AND EXQUISITE COLORS DURING THE FALL. BANNER ELK'S ONE-STOP-LIGHT TOWN IS A GREAT GETAWAY FOR FAMILIES WITH ENDLESS OUTDOOR OPPORTUNITIES INCLUDING ANTIQUE SHOPS, HIKING AND BIKING TRAILS, HORSEBACK RIDING, GOLF, SKIING, SHOPPING, WHITE WATER RAFTING, AND A PLETHORA OF DINING OPTIONS. THE CLOSEST INTERNATIONAL AIRPORT IS LOCATED IN WILMINGTON, NORTH CAROLINA.

AMENITIES

INDOOR SWIMMING POOL
JACUZZI
EXERCISE ROOM
STEAM ROOM
WHIRLPOOL
24-HOUR SECURITY
AND FRONT DESK SERVICE





FIREFLY RESORT LAKE LURE, NORTH CAROLINA

ACCOMMODATIONS

1 BEDROOM/1.5 BATHROOM
CONDOMINIUM
KING BED WITH EN SUITE FULL
BATH (MAX. OCCUPANCY: 2)

LOCATION

PRIVATE CONDOMINIUM LOCATED
IN A PREMIER GATED COMMUNITY
OF FIREFLY COVE. JUST MINUTES TO
LAKE LURE, CHIMNEY ROCK, BAT
CAVE AND THE SCENIC BLUE RIDGE
PARKWAY. LESS THAN 35 MINUTES
TO ASHEVILLE, THE ASHEVILLE
REGIONAL AIRPORT AND
DOWNTOWN HENDERSONVILLE.
DOWNTOWN ASHEVILLE OFFERS
FIRST-RATE RESTAURANTS,
ANTIQUING, BOUTIQUE SHOPPING,
GALLERIES, SPAS, AND
ENTERTAINMENT.





PALM AIRE POMPANO BEACH, FLORIDA

ACCOMMODATIONS

THESE SPACIOUS STUDIOS, ONE, AND TWO-BEDROOM RESORT SUITES COMFORTABLY SLEEP TWO TO SIX GUESTS AND FEATURE A FULL KITCHEN, WHIRLPOOL TUBS, DINING AREA, TVS, AND WI-FI. ENJOY BEAUTIFUL GARDEN OR GOLF COURSE VIEWS FROM THE BALCONY OR PATIO IN EVERY SUITE.



LOCATION

IDEALLY LOCATED JUST NORTH OF FORT LAUDERDALE, ALSO KNOWN AS “THE HEART OF FLORIDA’S GOLD COAST,” POMPANO BEACH IS HOME TO SOME OF THE WARMEST AND CLEAREST WATERS, GOLDEN SANDY BEACHES, AND CALMING BREEZES GIVING YOU A VERY WARM WELCOME TO YOUR VACATION. NEARBY, YOU CAN EASILY ENJOY EXCITING WATER ADVENTURES FROM DEEP-SEA FISHING, SCUBA DIVING TO PADDLE BOARDING, OR A GAME OF SAND VOLLEYBALL. LESS THAN A 20-MINUTE DRIVE TO FORT LAUDERDALE INTERNATIONAL AIRPORT, ARRIVAL IS QUICK AND STRESS-FREE, REGARDLESS OF WHERE YOU’RE TRAVELING FROM. WANT TO MAKE A DAY TRIP FOR MORE FUN IN THE SUN? MANY SOUTH FLORIDA CITIES SUCH AS PALM BEACH, BOCA RATON, AND MIAMI ARE ALL EASILY ACCESSIBLE.



GRAND BEACH RESORT – CLEARWATER BEACH, FLORIDA



ACCOMMODATIONS

A TWO-BEDROOM SUITE WITH 1 TO 2 BATHROOMS FEATURES A FULL KITCHEN WITH REFRIGERATOR, STOVE, MICROWAVE, COFFEE MAKER, AND GLASSWARE AND A DINING AREA. EACH SUITE HAS FREE WIFI AND AN IN-ROOM WASHER AND DRYER. SLEEPS FOUR.

AMENITIES

FOUR OCEANFRONT POOLS
HOT TUBS
BAR AND GRILL
BEACHFRONT RESTAURANT
SPA
FITNESS CENTER

LOCATION

LOCATED ON THE WEST COAST OF FLORIDA IN CLEARWATER BEACH, THE PIER 60 DAILY FESTIVAL OFFERS YEAR-ROUND EXCITEMENT AND THE CLEARWATER MARINE AQUARIUM SHOWCASES AQUATIC LIFE. JUST A 30-MILE DRIVE TO TAMPA AND YOU CAN CATCH A RAYS BASEBALL GAME OR A BUCCANEERS FOOTBALL GAME. TAMPA INTERNATIONAL AIRPORT (TPA) IS CONVENIENT FOR DOMESTIC AND INTERNATIONAL TRAVEL AS WELL AS AIRPORTS IN NEARBY CLEARWATER AND ST. PETERSBURG, FLORIDA.

SUNRISE LODGE – PARK CITY, UTAH

ACCOMMODATIONS

STUDIO CONDOMINIUM WITH 1
BATHROOM, SLEEPS 2

ABOUT

SUNRISE LODGE IS A SKI-IN RESORT THAT OFFERS A YEAR-ROUND DESTINATION FOR SKIING, HIKING, EXPLORING AND RELAXATION. A COMPLIMENTARY SHUTTLE SERVICE WITHIN THE PARK CITY RESORT AREA ENSURES YOU'LL NEVER BE FAR FROM SHOPPING, RESTAURANTS, AND ENTERTAINMENT. INSPIRED BY PARK CITY'S NATURAL SURROUNDINGS AND MOUNTAIN HERITAGE, THIS RESORT BLENDS RUSTIC ARCHITECTURE WITH MODERN ELEGANCE.

LOCATION

SUNRISE LODGE BY HILTON GRAND VACATIONS IS NESTLED IN THE CHARMING MOUNTAINSIDE VILLAGE OF THE CANYONS RESORT, ONLY FOUR MILES FROM DOWNTOWN PARK CITY, UTAH. LOCATED AT THE BASE OF THE SUNRISE LIFT, THE RESORT IS AT THE HEART OF HISTORIC PARK AVENUE, THE UTAH OLYMPIC PARK, AND THE ANNUAL SUNDANCE FILM FESTIVAL. THE SALT LAKE CITY INTERNATIONAL AIRPORT IS LESS THAN 30 MINUTES FROM PARK CITY.

